

The logo for WOODLE is displayed in white on a dark grey rectangular background. The word "WOODLE" is written in a bold, sans-serif font. The letter "W" is stylized, with its left vertical stroke enclosed within a circular shape that also forms the top curve of the letter. The remaining letters "OODLE" are in a standard, blocky sans-serif typeface.

WOODLE



You might have never seen anything like it. From building Shou Sugi Ban furniture as a hobby came the idea of slicing the surface of that wood to make a wall panel. Little bit of creativity added to the number of different options possible. With the help of extensive R&D, what started as a curious thought couple years ago turned into a whole new line of product.

These are natural wood planks. Fully hand made. Weathered and stained to perfection. About quarter-inch in thickness. Peel&stick for easy application. Planks mainly come either in 4" X 32" or 3.5" X 32" size, with a few shorter pieces inside each box to provide variety. Suitable for interiors only.



WOODLE



SNOWY DARK

See the dark in the snow. Produced from meticulously selected natural wood, this model is subjected to a series of highly controlled processes from harvesting to finishing in order to bring it to the desired humidity, texture and condition. Surface is aged through brushing for rustic looks, then colored with coats of black and white, waiting to dry between coats. Finally, it is polished to provide the perfect look at your space.

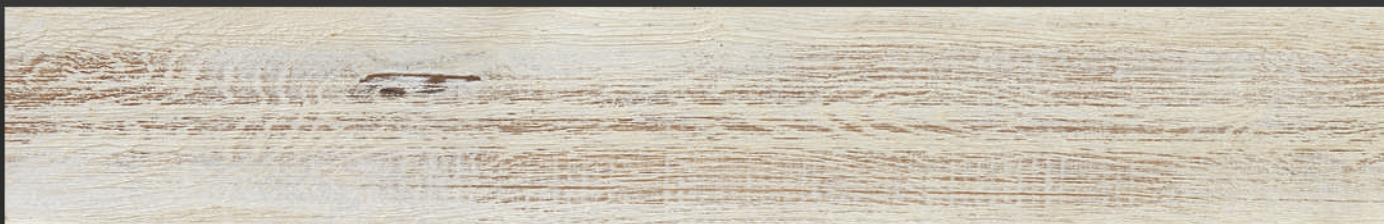
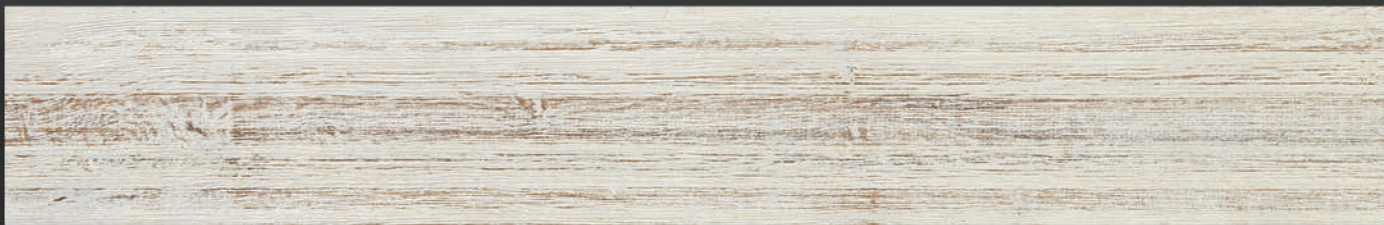


WOODLE



SNOWY LIGHT

See the light in the snow. As a similar process to the other models, natural wood is colored with water-based white color and then brushed and sanded, but we`re not done yet! We brush again to see the light in the snow. Finally, finishes with the matte polish before getting nicely packaged.



WOODLE



CLOUDY DAY

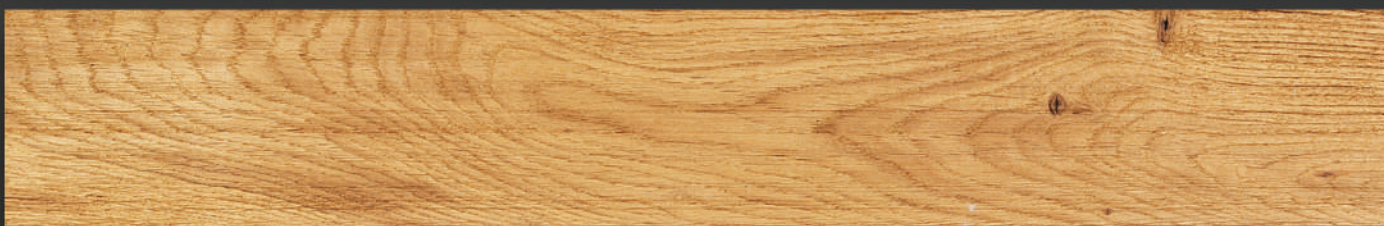
It's a Cloudy Day but the sun will always shine! As the name suggests, this model brings a rustic and artistic look into your projects. All produced from carefully selected and %100 controlled natural wood from harvest to packaging. Colored with water-based paints so you can use in your indoor spaces with peace of mind. After brushing for an aged look, two layers of paint are used; white and beautiful gray colors. To achieve the beautiful rustic look, sanding process takes place and finishes with the matte polish.





HONEY

You might be inclined to taste honey, but don't try. Harvested from natural wood forests and beautifully finished with water-based color of honey. Brushed and sanded afterwards. Final matte polishing is also applied before packaging for a long-lasting product.





MACCHIATO

Can you see the milk foam? In Italian, Macchiato means stained or spotted. These beautiful brown colored planks with light spotted finish on the surface have taken their name from the coffee macchiato. Made of natural wood. It`s dried, sized, and brushed carefully before color application. First water-based dark walnut color is used. After drying of the layer, deck oil is used for that beautiful look of macchiato. Finally sanded for the milk foam effect.

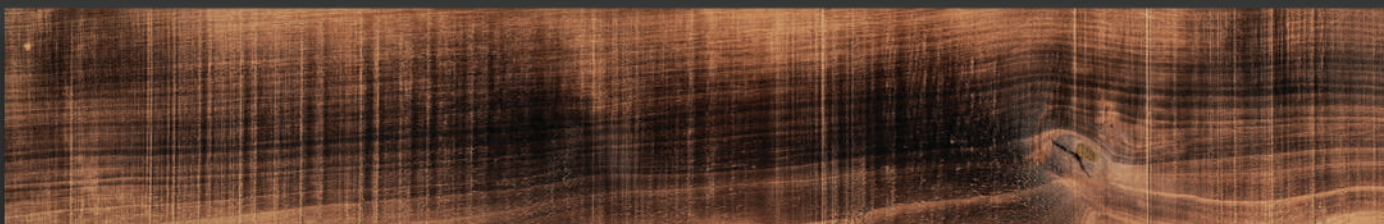


WOODLE



SIAMESE

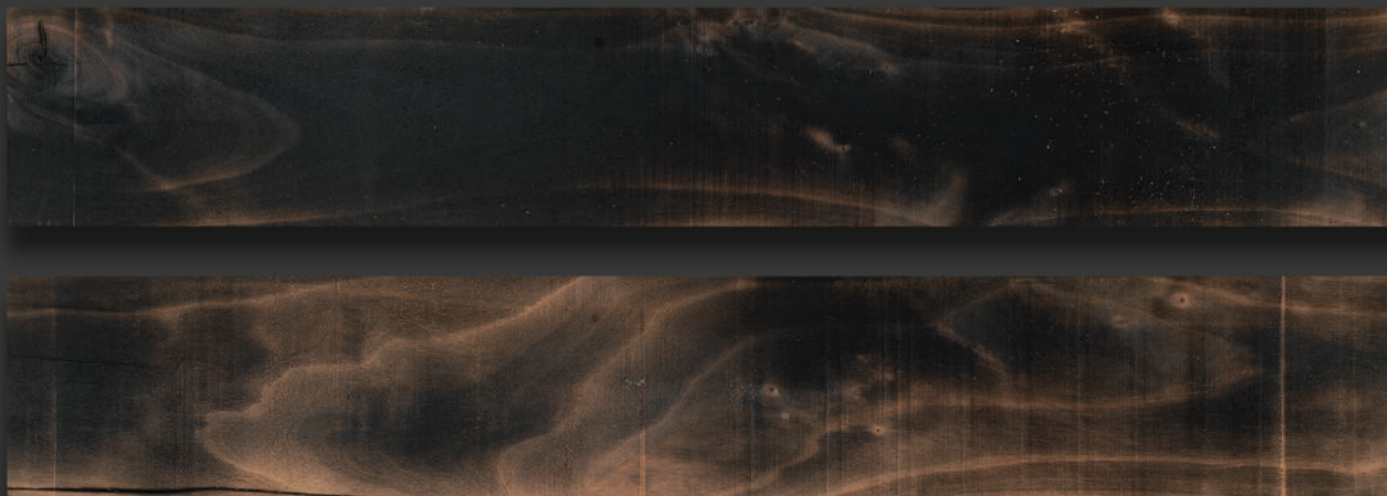
We are cat lovers! Name of this model comes from its similarity to the hues of Siamese cats. Made of natural wood and no pigments were used in production. Lightly touched with torch, a delicate process that could warp the planks if done incorrectly. Thanks to our specialists with surgical skills in flawlessly creating this beautiful Siamese cat look.





SHOU SUGI BAN

Shou Sugi Ban is a Japanese technique for preserving wood. We got our inspiration from this technique and burnt the wood to make a beautiful facade. No color is used in this model. Finished with matte polish before packaging. Konnichiwa!





DOUBLE ROASTED

Took its name from the double roasted coffee beans which are a perfect match in tones. Made of natural wood and carefully dried for sizing operation. First brushed and then beautiful “coffee bean brown” water-based paint is applied on surface. Finished with a matte polish for a long-lasting product.





COAL MINE

Beautiful matte black color inspired from coal mines.
Natural wood is meticulously controlled in every step of
the production from harvesting to the packaging.
Brushed and colored with water based black tones.
Final matte polishing is applied before packaging.

WOODLE



BLUEJEAN

Frankly speaking we didn't expect that we could reach this appearance during our innovation process. Beautiful tones on this model resemble the shades on bleached jeans with perfect navy blue hues. Made from oak species. Surface is brushed before age accelerators are applied. Finally sealed with matte polish for a gorgeous finish.



WOODLE



CUBAN BLUE

Ever been to Cuba? Nothing else would better describe the delightfully vibrant colors of this series. Touch your projects with an artistic look. This artsy model made of natural wood and colored with transparent oil-based colors after a meticulous brushing process is ready to create charming radiant environments.



CUBAN YELLOW

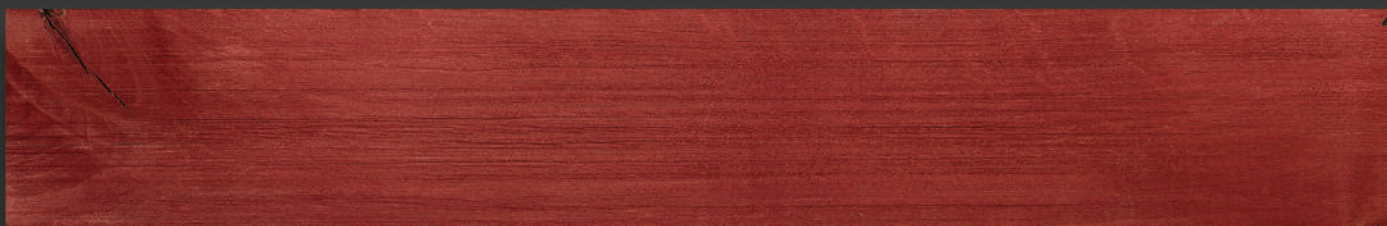
Ever been to Cuba? Nothing else would better describe the delightfully vibrant colors of this series. Touch your projects with an artistic look. This artsy model made of natural wood and colored with transparent oil-based colors after a meticulous brushing process is ready to create charming radiant environments.





CUBAN RED

Ever been to Cuba? Nothing else would better describe the delightfully vibrant colors of this series. Touch your projects with an artistic look. This artsy model made of natural wood and colored with transparent oil-based colors after a meticulous brushing process is ready to create charming radiant environments.



WOODLE

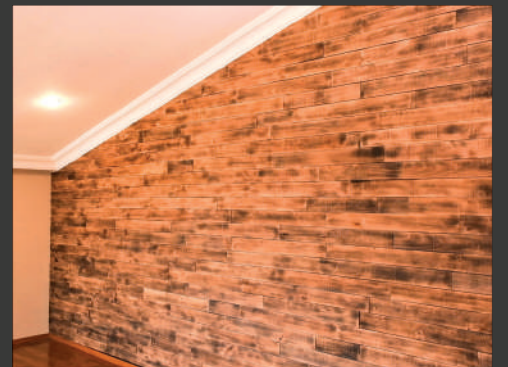


CUBAN GREEN

Ever been to Cuba? Nothing else would better describe the delightfully vibrant colors of this series. Touch your projects with an artistic look. This artsy model made of natural wood and colored with transparent oil-based colors after a meticulous brushing process is ready to create charming radiant environments.







IMPORTANT DETAILS: - Please take planks out of the box and let them sit in the space that they will be installed, for at least 72 hours before installation.

It's important for natural wood to stabilize its humidity and adjust to its new environment before application.

- Recommended relative humidity of project area should be between %35~%65 and room temperature 62 ~76 degrees Fahrenheit. Do not use in spaces with great temperature or humidity fluctuations. This is a natural wood product and such changes can cause it to shrink, expand, or warp.

- This product is made for interiors only. Do not use in spaces where it may come under direct contact with water.

INSTALLATION INSTRUCTIONS AND SOME HELPFUL HINTS:

1. Thoroughly clean the surface before application. Any dust, dirt, or grease will greatly weaken the adhesive. If surface has paint on it, lightly sand the area before application.

2. Surfaces such as raw drywall are best substrates for adhesion. Porous, dusty, or unstable surfaces, such as brick, stucco (popcorn), etc will provide little to no adhesion. Recommended method of application for these types of surfaces is mechanical attachment. On any surface you're unsure about, you can apply with the peel and stick adhesive first, then reinforce areas that need attention with nails. Alternatively, you could fasten a thin layer of drywall on your unaccommodating substrate at the very beginning, then easily continue with the peel&stick application.

3. Before beginning to apply the planks, plan where to start as well as the direction of application. Take note of outlets, window trims, etc details within your application area, and decide where you want to start accordingly.

4. Easily peel the adhesive tape and start putting up the planks. Keep in mind that adhesive tape is very powerful and provides an instant bond. It will not allow to budge once a plank is placed on the wall.

5. Make sure to press along the full surface of each plank thoroughly to assure peel&stick adhesive gets a good grip on your wall. You can also use a rubber roller for that purpose.

6. If possible, a substrate that is similar in color to the planks will help make any gaps unnoticeable. If not, using a marker or paint in similar color to mark up the substrate around planks will also help any gaps become unnoticeable.

7. Make sure to apply planks in a single direction (bottom-up or top-down). Also make sure to finish a whole row before moving onto the next row. Remember you're doing this by hand and lines will not be perfect. If you attempt to fill in rows that are in the middle, you might have problems with either fitting the planks in or having wide gaps in between.

8. Planks can easily be cut with an electric saw or a hand saw. Use proper safety tools and practice caution to avoid any personal injuries. Once you've cut a plank, it's recommended to place the exposed side towards the intersecting wall so it will not be seen within the application area.



9. To clean the surface, all aggressive cleaners (such as bleach, ammonia, etc) must be avoided as well as solvents (alcohol, acetone, trichlorethylene, etc). Also, universal degreaser and abrasive materials are not recommended because they can damage the film of paint. Only water based coatings and neutral soap are recommended. Cloth should be lightly damp, because any extra wetness will get absorbed into the plank and will cause warping or movement. Use a lint free cloth and apply little pressure as surface of planks are rough and may not allow to easily rub across the face.

Still have questions? Feel free to contact us. We're always happy to provide the necessary support.

Enjoy your new decoration !



GENERAL PROPERTIES:

Material: Natural wood.

Species: Alder and oak

Thickness: app 5 mm

Weight: app 4 kg / m²

Size of planks: Depending on the specific batch, 10,2 cm X 82 cm or 9 cm X 82 cm in dimensions, with a few shorter pieces inside each box to provide variety.

Box coverage: 1,4 m²

Box weight: app 6 kg

Peel & stick function: Yes

Interior use: Yes

Application on the floor : No

Exterior use: No

Use on wet areas: No

Type of stains: Water based. Safe for health.



Woodle Dış Ticaret Ltd. Şti.

www.thewoodle.com

info@thewoodle.com +90 216 706 9663